



Guide Dogs



David Walliams is a big supporter of Guide Dogs. A couple of years ago, he had a special guide dog puppy named after him.

"This is the 10,000th Guide Dog puppy. His name is David, and I am proud to say they named him after me. It is an honour to be involved with the life changing charity."

Activity 1: What Does a Guide Dog Do?

Key Vocabulary

Guide dog, crossing kerb, obstacles, corner, brave, confident

Video to Watch

<https://youtu.be/6Ad798HWGEA>

Introduction

A guide dog enables its blind or partially-sighted owner to get around safely and independently. It guides its owner in a straight line, unless told otherwise, avoiding obstacles - including those at the owner's head height. It will stop at kerbs and steps and find doors, crossings and places that are visited regularly. It will guide its owner across the road, but it is the owner who decides where and when to cross safely

Video: Key Questions

- What does Alma do when she comes to a corner?
- What does she do when she comes to a kerb?
- What does she do when she comes to steps/stairs?
- What does Alma do when there are people around?
- Did anybody spot any obstacles? They may have noticed A-boards outside shops, bikes propped against shop windows etc.
- What has Alma the guide dog had to avoid?
- Where do Alma and Nicky end up?

Activity 2: How are Guide dogs trained?

Key Vocabulary

Puppy walker, training, qualities, volunteer

Video to Watch

<https://youtu.be/AHXMePThvgw>

Introduction

A guide dog needs to have very special training to do his/her job to the high standards required. It starts when they are very young.

Video: Key Questions

The life of guide dogs

- How does Retinitis pigmentosa affect sight?
- How do guide dogs help their owners?

Guide dog puppies

- What happened when the puppies were six to eight weeks old?
- What is the volunteer who looks after the pup known as?
- What sort of things are the puppies introduced to? Why are these important?

Guide dogs in training

- What colour harness do the dogs wear at the Guide Dog Training School?
- What do the dogs do when they reach an obstacle?
- How are the dogs rewarded when they get things right?

Matching the dog with their owner

- What forms of transport does Chad need to be able to go on?
- Where does Chad take Dave to every day?
- How long did Chad and Dave train together for?

A litter of guide dog puppies are born. Each litter is named after a letter of the alphabet.



At 6 weeks old they are each given a health check and vaccinations then each one goes to live with a volunteer Puppy Walker. They learn about the world, sights, smells and sounds, such as busy roads and going on buses and trains.



They go to puppy class and are taught to walk ahead on the lead and words like sit, stay, down and come.



They are now dogs and say goodbye to their volunteer puppy walker and go to training school. At school they wear a brown training harness.



If the training is successful, the owner hands over 50p and the guide dog is awarded with a white harness and their lifetime partnership begins.



Once matched the owner and guide dog train together for 4 weeks. Training on the routes their person needs to know, to get to places such as the shops, work and home.



Next the dogs are matched with the correct owner. Walking speed, height, the person's eyesight and person's day to day life are all checked to get the right match.



At school they learn to walk in a straight line unless there's an obstacle. To stop at kerbs and wait for the command to cross or turn left or right.



Activity

Imagine that The Guide Dogs for the Blind Association are looking for a puppy to train as a guide dog.

Think back to the video and class activity for the qualities needed for a guide dog.

Imagine you are a puppy and fill in the application to become a guide dog.

First of all come up and choose the dog they would like to be from the Our Breeds poster on the next page and write this information along with their name.

Then describe yourself and explain why you should be considered for this important job. Think about the things the puppy would already be good at.

Application to become a guide dog



Choose the type of dog breed you are:

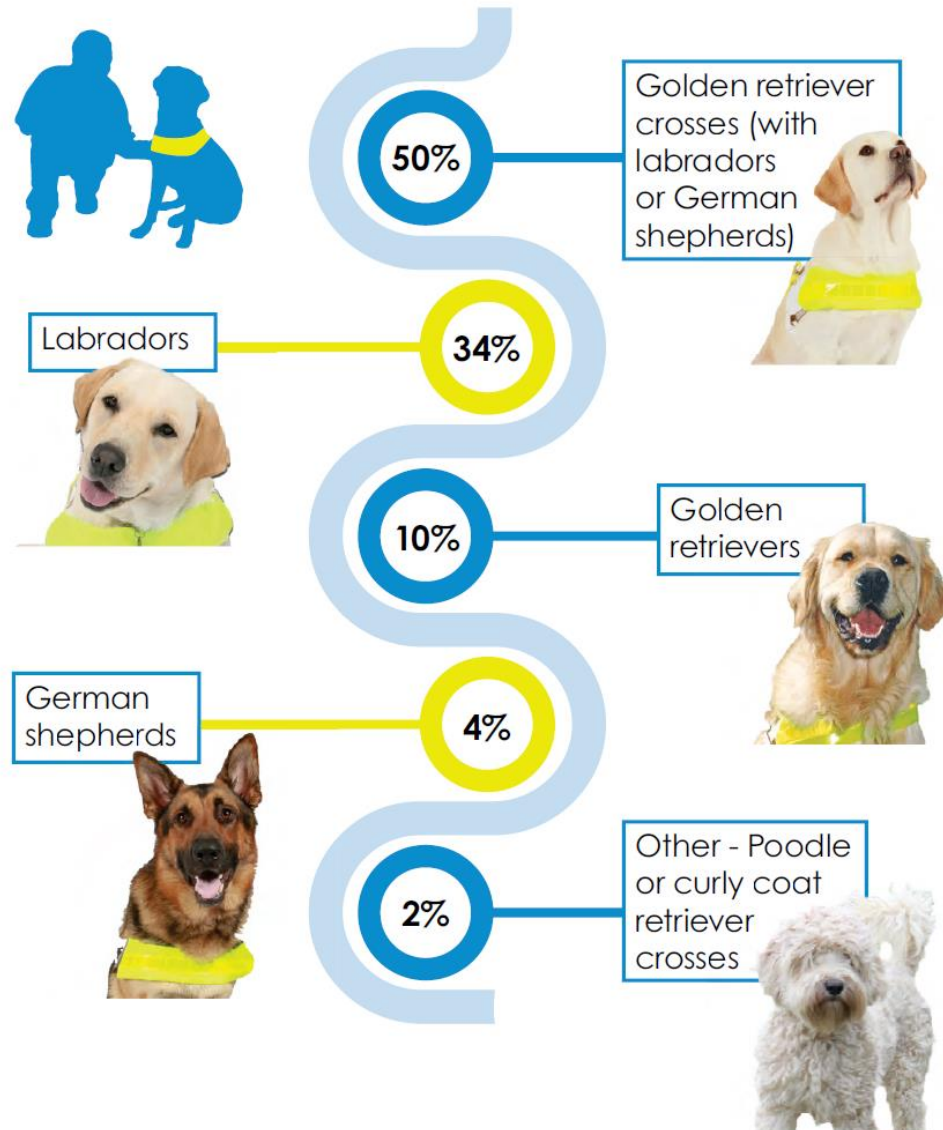
I am a

Your Name

Describe the qualities that mean you would make a good guide dog:

Our Breeds

We train different breeds to become guide dogs,
In 2016, our guide dog stock comprised:



Activity

Imagine you are one of the puppy walkers and write a diary about a recent experience, that you and your guide dog have experienced such a day at the seaside or travelling on a bus or train.

Puppy Walker Videos

<https://www.youtube.com/watch?v=idmcj0ky7Fg>

<https://youtu.be/zgUceoNNF-g>

What does Puppy Walking involve?

Puppy Walkers play a vital role in the early socialisation and education of guide dogs. At about seven weeks of age, puppies start their early training, remaining with you until between 12-16 months of age. They then head off to a training centre to begin their specialised training.

- You will need to care for, feed and train the puppy. This is very time consuming and – particularly when young – our puppies cannot be left on their own for more than three hours.
- You will be expected to teach basic obedience commands and you will need a suitable outside area (ideally gravel or pavement) where the puppy can go to the toilet.
- The puppy must be familiarised with different environments and you will be expected to introduce the puppy to different people, sounds and situations.

Now you have learnt all about guide dogs, enjoy this very cute video of the guide dog puppies working on the Andrex advert!



<https://www.youtube.com/watch?v=R-IFWxiTlOo>